

LUXURY LAKEFRONT LODGE ON LONG LAKE

# The Long Lake Lodge

AIRBNB &  
DIRECT BOOKINGS

Thank you for choosing to stay with us!  
We are thrilled to welcome you to  
The Long Lake Lodge!

7251 COUNTY ROAD B SIREN WI 54872

Welcome

TO  
OUR  
HOME!



Thank you for choosing to stay with us! We are excited to welcome you to The Long Lake Lodge.

We invite you to browse through our welcome book, where you can find all the information about the house and about our favorite local places to visit!

If you have any questions or need anything at all during your stay please don't hesitate to contact us by using the airbnb app. Welcome to Siren, Wisconsin.

Enjoy your stay!

*Donavan & Sara*

# CONTENTS

- 01 WIFI INFORMATION
- 02 CHECK-IN DETAILS
- 03 HOUSE RULES
- 04 HOUSE RULES CONTINUED
- 05 CHECK OUT PROCEDURES
- 06 ESSENTIALS
- 07 HOME GUIDE
- 08 HOME GUIDE CONTINUED
- 09 RESTAURANTS
- 10 RECOMMENDATIONS
- 11 EMERGENCY SERVICES
- 12 FOLLOW US!



WIFI CODE

# CONNECT TO WIFI



*The Long Lake Lodge*



No Password



01



# CHECK-IN

---

Check-in is from 4pm | Check out is promptly 11am

## PARKING

### Parking Spots:

There is ample room on the property for parking. You are welcome to use the garage to park any vehicles and also to charge any EVs. Please access the garage door opener through the house and make sure the doors are closed when you leave. You are also welcome to park in front of the garage, next to the garage, or in front of the garages of the small house.



02

# HOUSE RULES



- **Guest authorization:** Only the number of guests confirmed on the booking are allowed at the lodge. Our maximum capacity per county rules is **not to exceed 20 persons**.
- **No smoking:** No smoking. This includes the use of tobacco, cannabis, e-cigarettes, etc. If there are signs smoking took place extra cleaning fees will be applied.
- **Quiet Hours:** Per Burnett County ordinance quiet hours must be observed between 10pm-7am. A tornado siren will announce the start of quite hours every night at 10pm.
- **Cleanliness:** Please treat this like your own home! Please do not wear shoes inside the house and try to keep sand outside. Tidiness is appreciated.
- **Pets:** We love the furry friends, but we are not permitted for pets.
- **Checkout time:** Guests should complete checkout procedures by 11 am. See check out procedures list.
- **Parties:** Not permitted.

# HOUSE RULES



- **Damages:** We understand accidents happen! We appreciate honesty and promptness when reporting any damage.
- **The Lake:** Children must be supervised near the water at all times and life jackets are required for any non-swimmers. Please put life jackets back into the box and ensure any other equipment is secured.
- **The Lake:** No diving from the dock.
- **Campfires:** Permitted in the fire pit only. Restrictions may apply during burn bans. Wood is provided and there is a lighter in the kitchen desk drawer. Please return it when finished.
- **Baby gate:** Please use the retractable baby gate at the top of the stairs with young children present to prevent any falls.
- **Hot Tub:** Keep the cover on the hot tub when not in use. No glass permitted. Children under 6 not permitted, children or anyone with a disability must be supervised at all times. Turn off all jets after use, replace, and lock the cover.

# CHECK OUT PROCEDURES



- Check out is promptly at 11am. We appreciate your cooperation in this as we typically have other guests who need to check in and it is a large property to maintain.
- Place all trash in the provided containers at the end of the driveway and secure the lids to prevent any wildlife.
- Place all used towels in the laundry room. No need to start the washer.
- Strip sheets off of any used beds.
- Load and run the dishwashers in the kitchen and basement wetbar. Please set the cycle to sanitize.
- Please close up curtains and shades on all windows that have them. This helps keep the house cool between guests.
- Tidy any toys or pool table equipment that was used.
- Ensure lake toys, lifejackets, canoes, and kayaks are secured.
- Ensure garage doors are closed.
- Ensure doors and windows are closed and locked.
- Ensure propane grill is turned off.

# ESSENTIALS

---

*Need groceries or forgot something? These places will help!*

## FOURWINDS MARKET AND LIQUOR

7389 Airport Road Siren, WI 54872. 10 minute drive. Full service grocery store and liquor.

## CIRCLE K

Open 24 Hours. 24096 WI-35 Siren, WI. 3 minute drive. Gas and snacks, etc.

## FAMILY DOLLAR

24173 WI-35 #70, Siren, WI. 5 minute drive. Where you'll find any forgotten toiletries and basics.

06



# HOME GUIDE

---

## THERMOSTATS

We have several nest thermostats in the house. Please do not use any of the labeled “in floor heat” thermostats in the summer months or it will get hot inside the house! You may adjust the thermostats that are labeled heat/AC. Please utilize the shades to keep the sun out so the A/C does not need to run 24/7 in the summer months. If you need any help with the thermostats, please message us, as we can control them remotely! Opening the windows and doors in the evenings is a great way to let cool air in too.

## GARBAGE

You will find a garbage bin in the kitchen to the right of the sink (double pull out). Please remove your trash upon checkout and place in the provided containers at the end of the driveway. Please leave the cans at the end of the driveway.

Please ensure the bins are closed to ward off any critters. We have bears in Northern Wisconsin!

# 07



# HOME GUIDE

---

## TV AND ELECTRONICS

If you would like to unwind and utilize the TVs in the house, please use your login information. Feel free to download any apps for your accounts that we do not already have. Please make sure to logout before you checkout!

## HOT TUB

We are happy to offer a hot tub for use during your stay. Please follow all the rules (see house rules) and do not change any settings.

# 08



# RESTAURANT RECOMMENDATIONS

## 1 THE POUR HOUSE

Breakfast, lunch, and dinner served. Choose from the lounge or dining room.



## 2 ADVENTURES RESTUARANT AND PUB

Lunch and dinner served.



## 3 KNOTTY PINES ON CLAM LAKE

Scenic lakeside vibes, family friendly.



## 4 MONTE'S PIZZA

Don't feel like cooking? Pizza night! Take out or dine in.



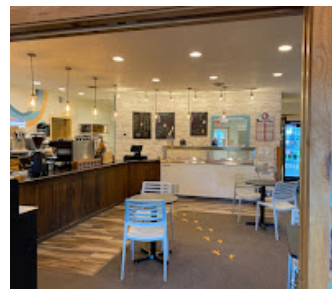
## 5 CHATTERING SQUIRREL COFFEE CAFE

Coffee cafe with a drive thru!



## 6 SILLY BIRD CANTEEN

Coffee, ice cream, and cafe.



# 09

# MORE RECOMMENDATIONS

*Some local activities and day trips to make your stay unforgettable! Scan the QR code for more information on each one. These are just a handful of amazing things around the area. Look through the brochures and materials we have provided for even more ideas!*



## ACTIVITIES

- Fawn Doe Rosa
- Spooner Train- Great Northern Wisconsin railroad
- Interstate State Park
- Moose Mulligan Adventure Golf
- Siren National Golf Course
- St. Croix Casino
- Hinkely Casino
- Gandy Dancer Trail
- Brickfield Brewing
- Burnett Dairy

# 10



# RENTAL GUIDELINES & CONTACT INFORMATION

---

## Owner & Operators

The Long Lake Lodge, LLC  
Donavan & Sara Fritz

## Local Contact

Ken Erickson  
(715) 566-1365

## Occupancy Limit

Maximum occupancy of the rental unit shall not exceed: **20 persons**

Occupancy limits shall be strictly enforced at all times.

## Noise & Conduct

Guests shall comply with all Burnett County noise ordinances.

- Quiet hours must be observed.
- Disorderly conduct, excessive noise, or nuisance behavior is prohibited.

## Parking Requirements

Parking is limited to designated on-site parking areas only.

**Parking is NOT permitted:**

- On County Road B
- Within the road right-of-way
- On grass, vegetation, or non-designated areas

## Garbage & Recycling

- Garbage and recycling must be placed in the provided containers.
- All containers must remain closed to prevent wildlife access.
- Overflowing or loose garbage is prohibited.

**Garbage collection/service provider:**

- Waterman's Disposal and Recycling

## Emergency & Contact Information

For all emergencies call: 911  
Police: (715) 349-7181  
Fire: (715) 349-2466

**Nearest Emergency Room:**

Burnett County Medical Center  
257 W George Ave, Grantsburg

## Licensing Information

Wisconsin State License Number: ATCP-055899  
Burnett County License Number: STR 26-65  
Burnett County Land Services: (715) 349-2109

# EMERGENCY SERVICES

---

*Call 911 for emergencies  
7251 County Road B Siren, WI 54872*

BURNETT MEDICAL CENTER

257 W St George Street Grantsburg, WI

SIREN POLICE (NON EMERGENCIES ONLY)

24049 1<sup>st</sup> Ave. Siren, Wi 54872 715-349-7181

SIREN FIRE DEPARTMENT (NON EMERGENCIES ONLY)

23788 WI-35 Siren, Wi 54872 715-349-2466

LOCAL CONTACT

Brooks Krueger

612-751-5367

11





# THANK YOU FOR STAYING WITH US!

We are glad to host you in your short stay at The Long Lake Lodge! We hope you will come back soon.

If you prefer to book directly, or would like to share our booking with others, please check out our website:  
[www.thelonglakelodge.com](http://www.thelonglakelodge.com)

 FOLLOW US  
@THE.LONG.LAKE.LODGE